



cepezed

develop | design | build

menno rubbens, msc architect

director cepezedprojects

member transitionteam circular buildingeconomy

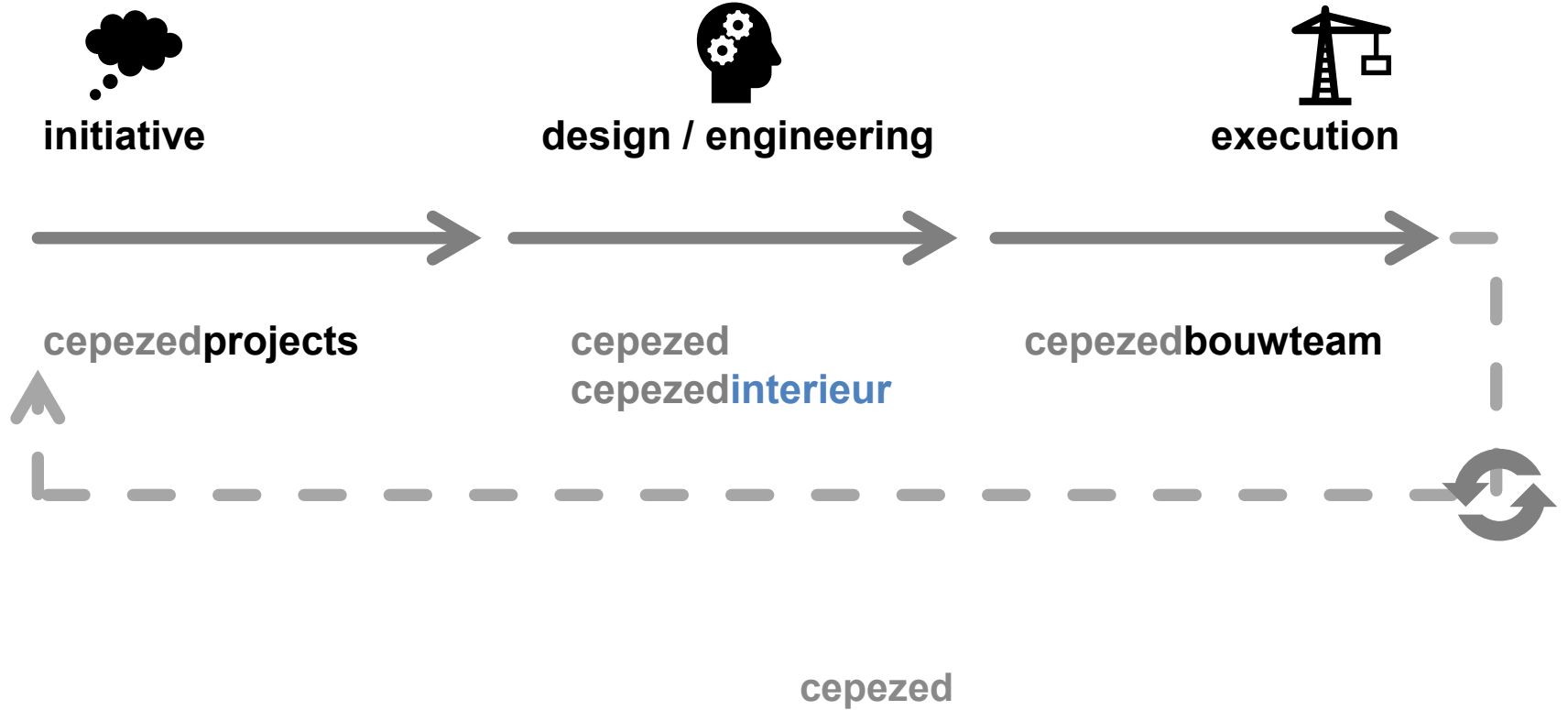
22 oktober 2020

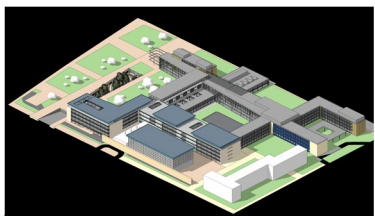
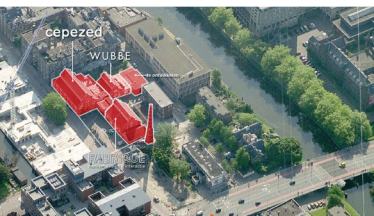
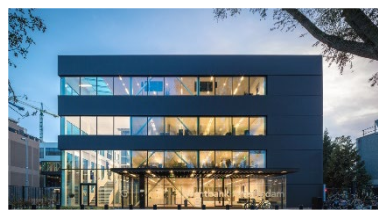
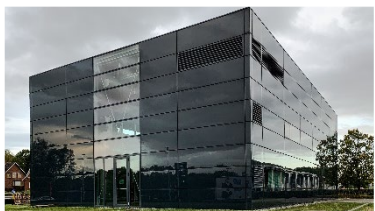
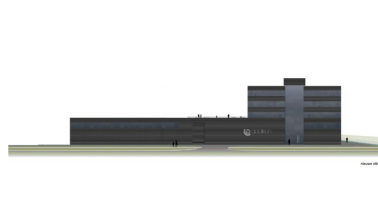
Stålbyggnadsdagen

Cirkulär fastighetsutveckling mot 2045

cepezed

develop | design | build



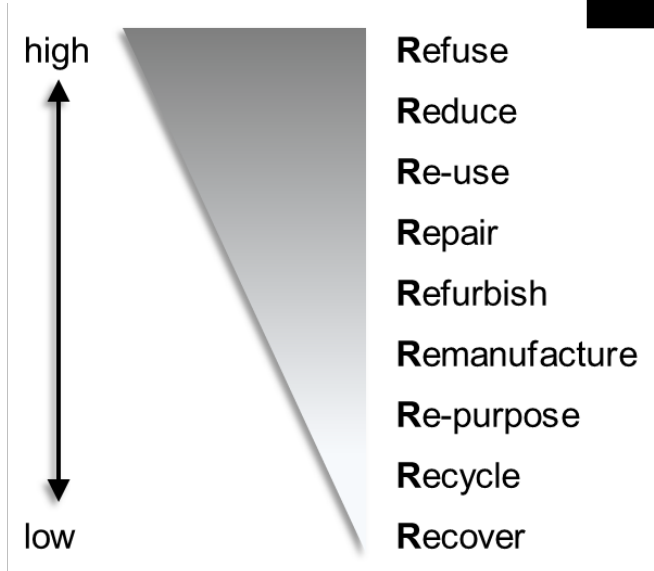




**meet the needs
of the present**

**without
compromising
future
generations**

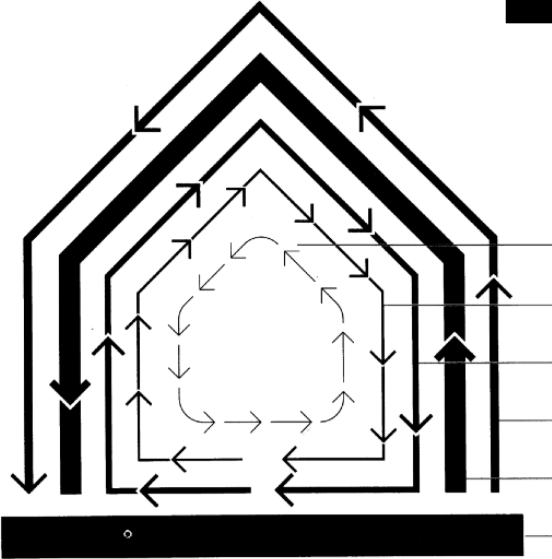
brundtland commission, 1987





**all buildings
are predictions**

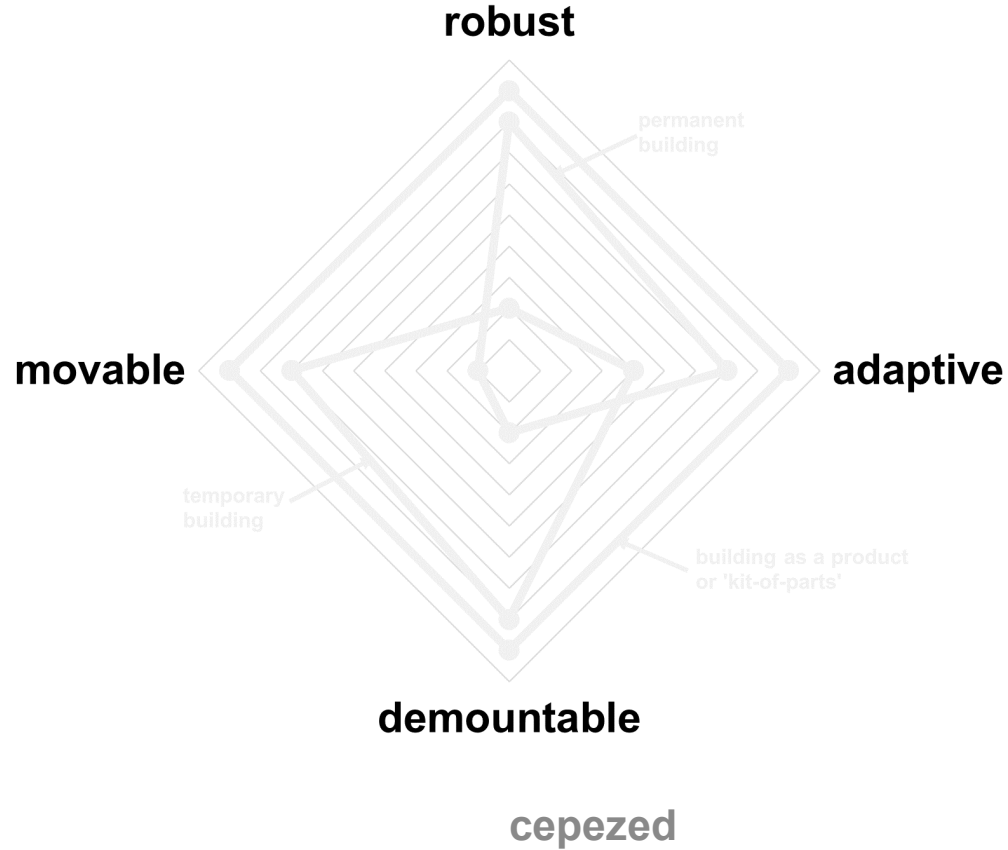
**all predictions
are wrong**



stewart brand, 1994

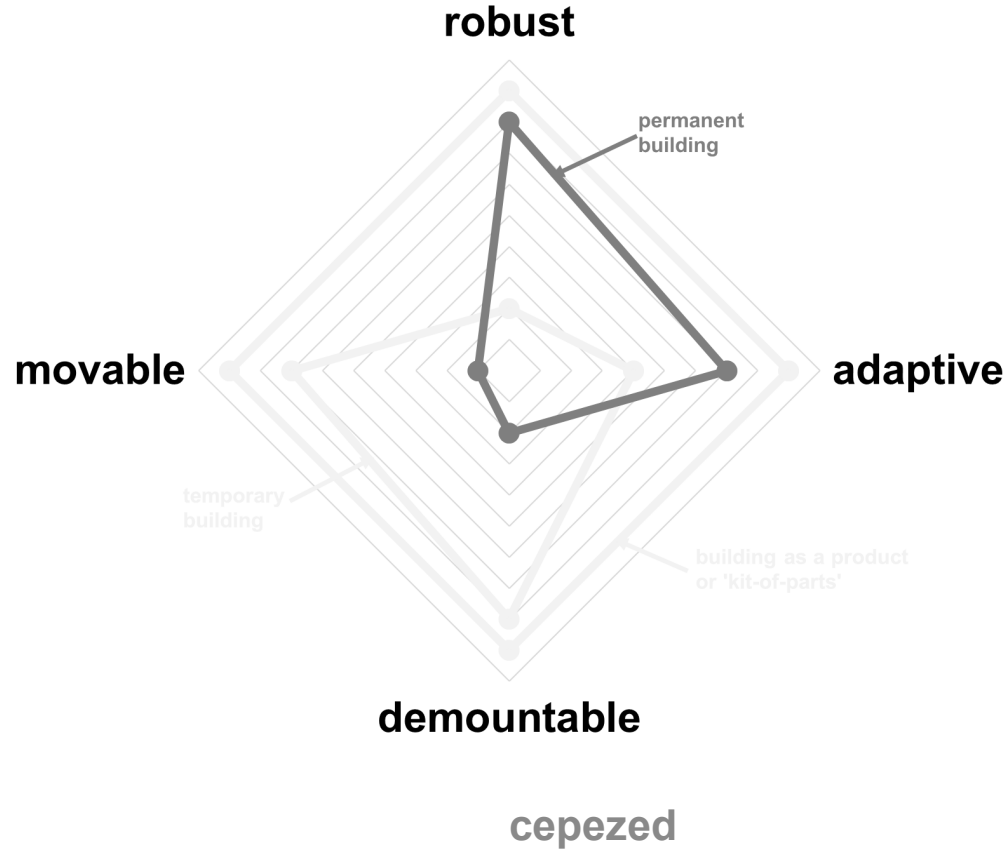
circular building

building as a product



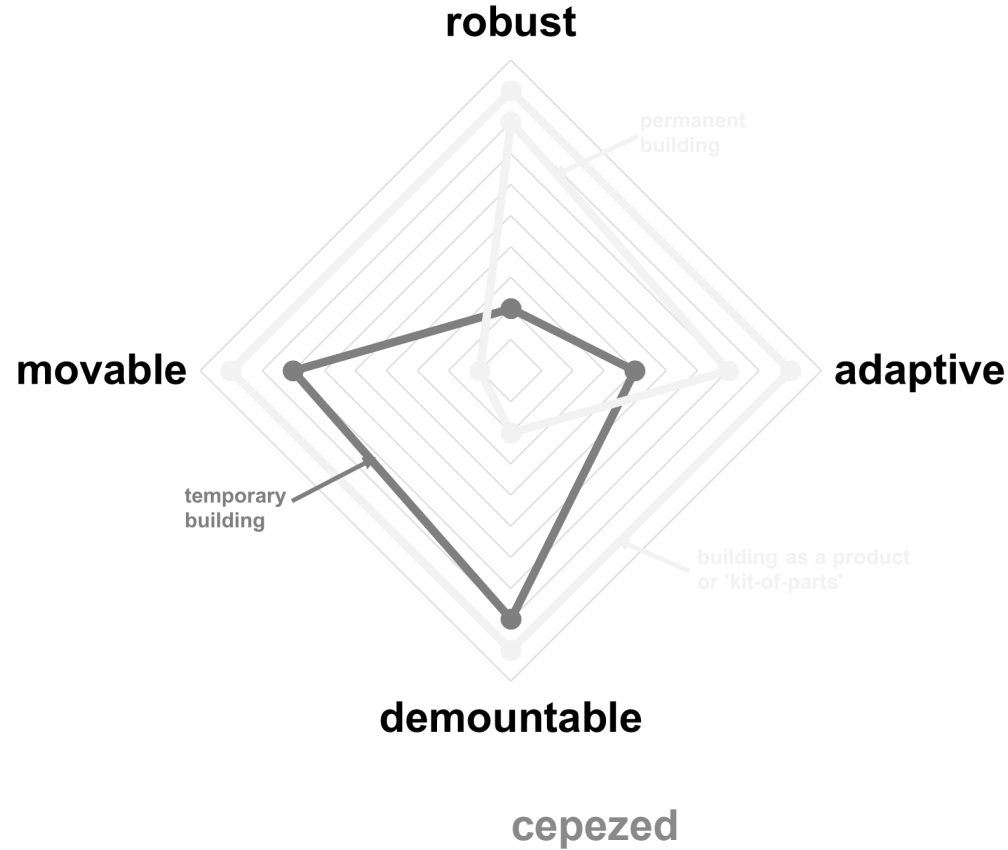
circular building

building as a product



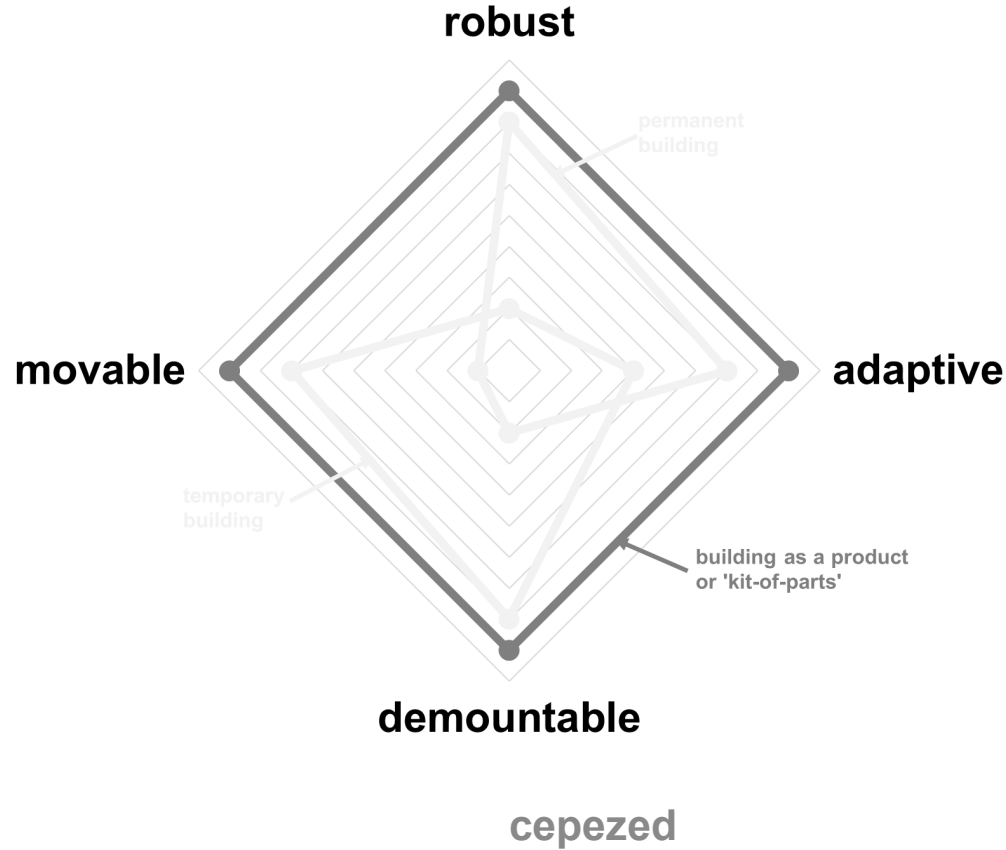
circular building

building as a product



circular building

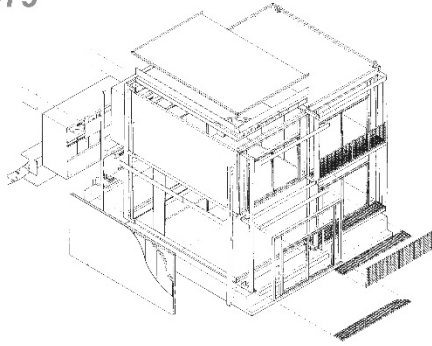
building as a product



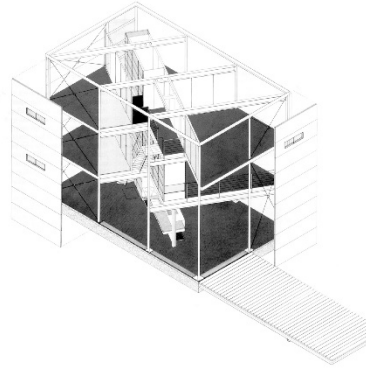
circular building

kit of parts

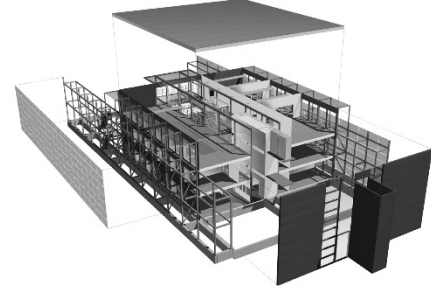
1979



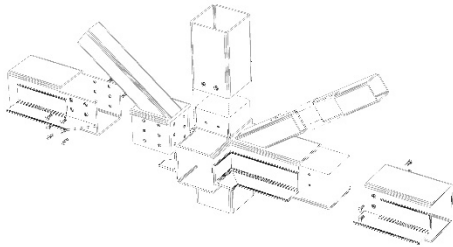
1989



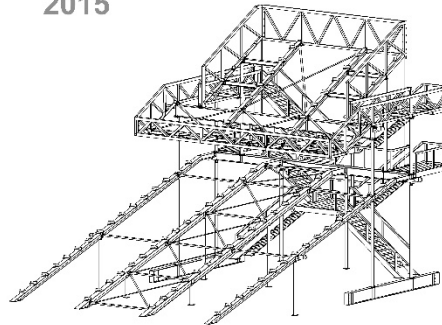
1995



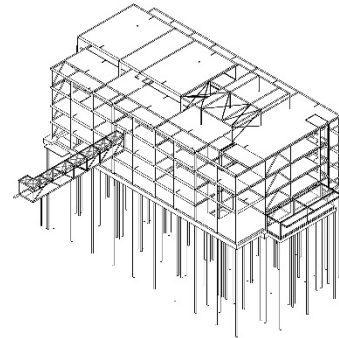
2004



2015

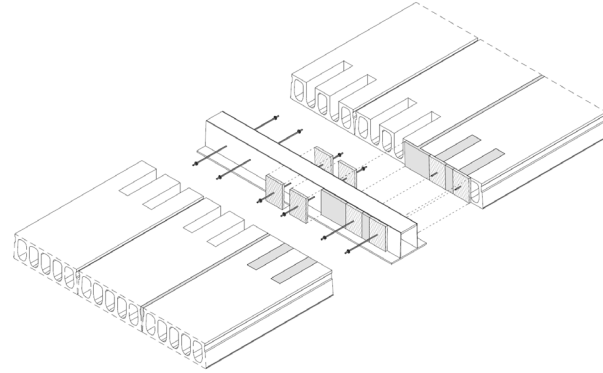


2016



cepezed

building as a product



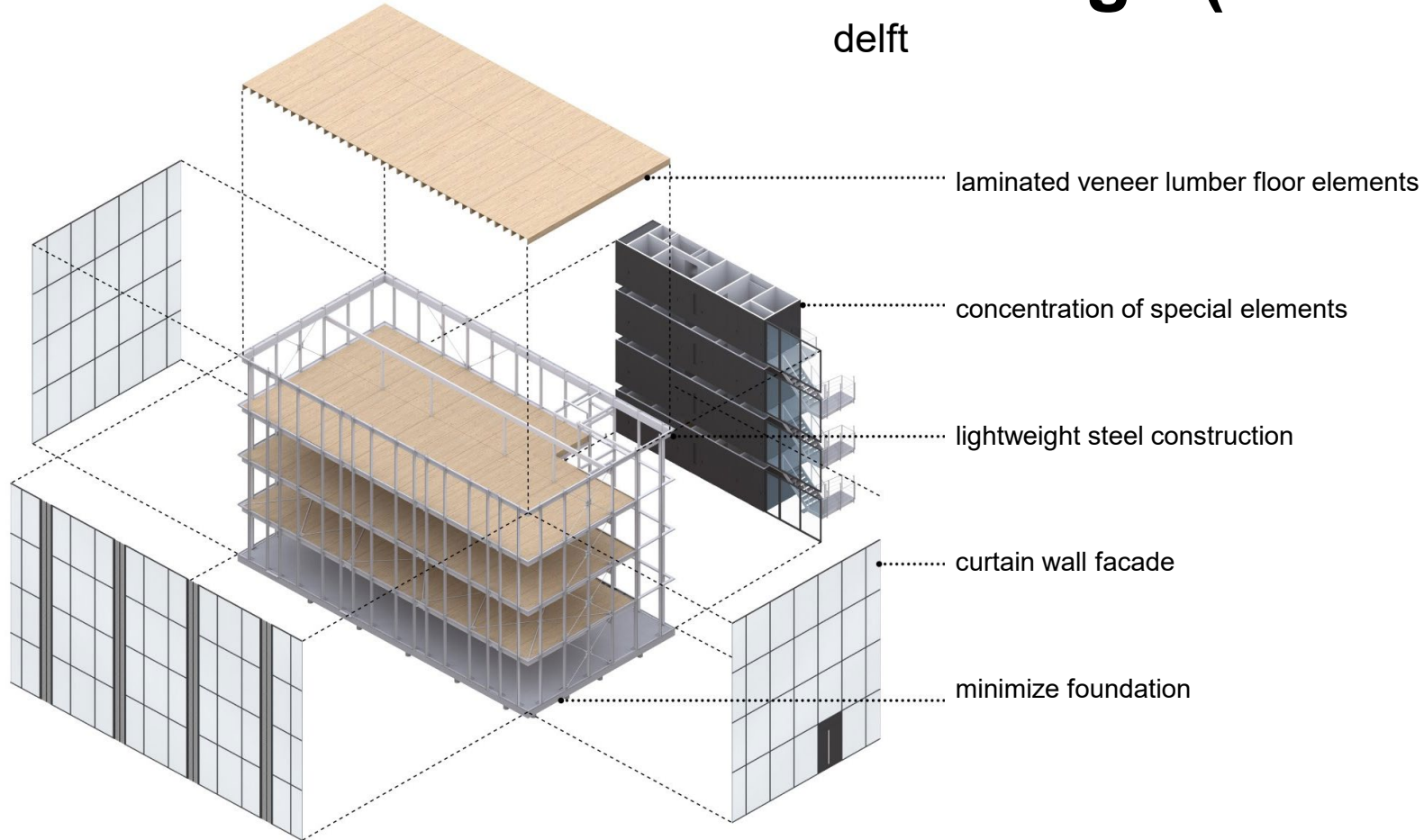
building d(emountable)

delft



building d(emountable)

delft



cepezed

building d(emountable)

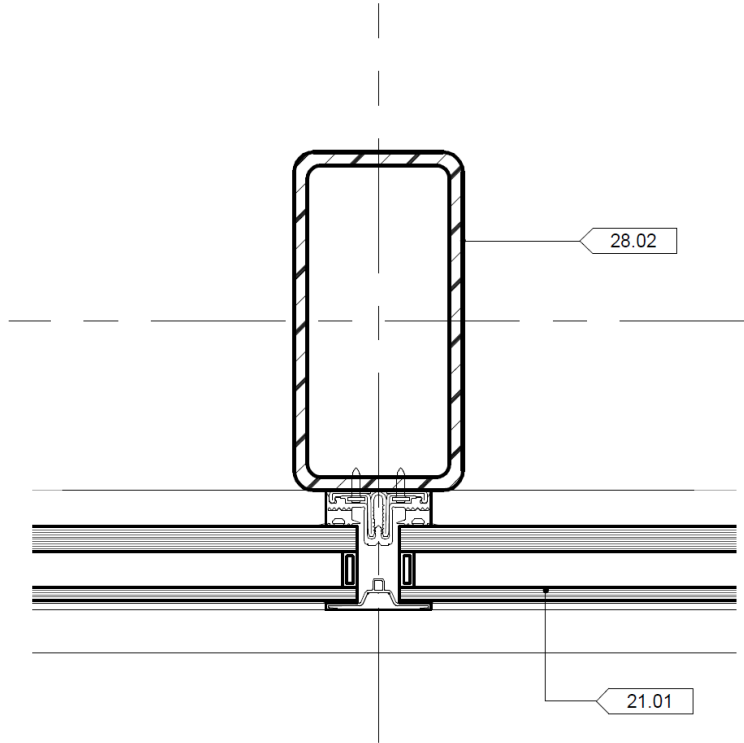
delft



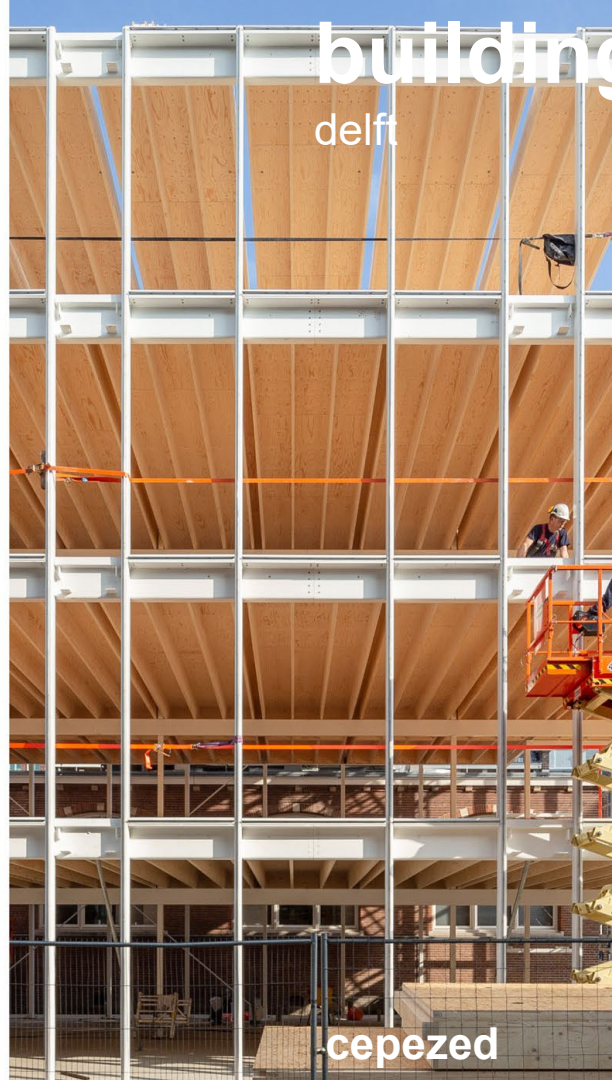
cepezed

building d(emountable)

delft



cepezed





building d(mountable)
delft

cepezed

building d(emountable)

delft

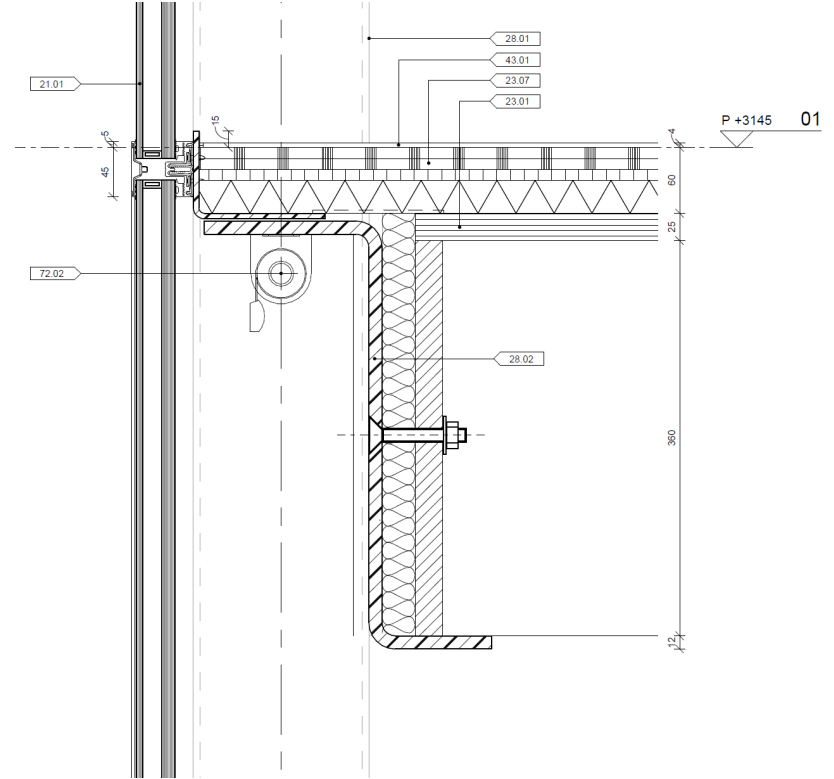


cepezed



building d(emountable)

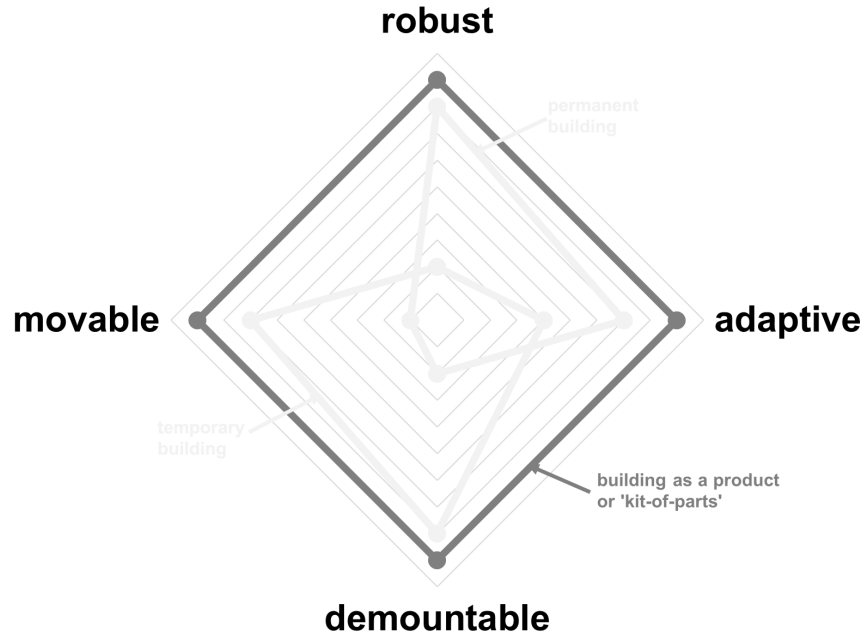
delft



cepezed

circular building

building as a product



don't compromise the future

don't predict, anticipate!

focus on refuse, reduce and re-use

building as a product: kit-of-parts

make your process design driven



cepezed

develop | design | build

menno rubbens, msc architect

director cepezedprojects

member transitionteam circular buildingeconomy



menno.rubbens@cepezedprojects.nl



[linkedin.com/in/mennorubbens](https://www.linkedin.com/in/mennorubbens)